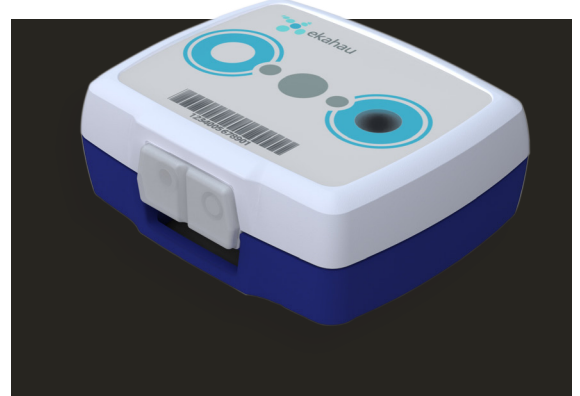




Wi-Fi Tag Family

Ekahau A4 and A4+ Asset Tags

The Ekahau A4 is an active RFID location tracking tag that offers ultra-high location accuracy using any standard 802.11b/g Wi-Fi networks and integrated infrared sensors. The Ekahau A4 contains two configurable buttons used for sending alarms or notifications. The Ekahau A4+ provides users with the option to utilize an external supply as the primary power source, which includes a backup battery. These Ekahau asset tags can also be configured and managed remotely. The tags' LED indicators and buzzer can even be remotely triggered to identify the correct tag or to alert personnel for a variety of operational benefits.



Ekahau B4 Badge Tag

The Ekahau B4 is a rechargeable, locating device with an LED display that enables users to receive text messages based on proximity, location, or badge-triggered events and alarms. Users can program the messages using Ekahau Vision™ software and configure them with rules relating to status or real-time location changes. The built-in, two-way messaging with panic button functionality is a distinguishing feature of the Ekahau B4. Ekahau B4s and Ekahau Vision have the ability to send alarms or route messages to third-party applications using an open API, too.



Ekahau W4 Wristband Tag

The Ekahau W4 offers real-time location visibility on virtual maps with reliable room-level and bed-level accuracy. Ekahau W4 tags are worn comfortably on a person's wrist using a detachable wristband with a lock-in mechanism, which makes it easy to put on and prevents removal of the band, when in use. The Ekahau W4 is waterproof, enabling users to comfortably bathe while wearing the tag and improving ease of cleaning after tag use. The tag includes a two-color LED, a customizable call button for emergency notifications, as well as a build-in motion sensor to detect movement or immobility. The Ekahau W4 also utilizes a vibration alarm to send an alert to wearers.



Ekahau TS Temperature Sensors



The Ekahau TS1 and TS2 are wireless temperature sensors used to measure, monitor, and report freezer and refrigerator temperatures in hospitals, retail stores, and other facilities. Ekahau TS sensors come with an external probe (two probes in the case of Ekahau TS2) that is placed inside the freezer or refrigeration unit. The Ekahau TS1 and TS2 have built-in logic to manage frequent sampling of the temperatures and can immediately report any anomalies that are detected. A standard probe is able to measure temperatures from -50° C / -58° to 257° F. An optional cryo probe enables measuring temperatures as low as -200° C / -328° F.

Ekahau HS1 Humidity & Temperature Sensor

Monitoring humidity and temperature is vital in environmentally sensitive areas such as operating rooms and other medical storage rooms areas as well as food production and manufacturing facilities. By ensuring the correct humidity and temperature levels, hospitals and factories can improve infection control and help prevent spoilage. The Ekahau HS1 automates temperature and humidity monitoring using Ekahau Vision, alerting if temperature or humidity reaches near-breach levels that are outside of a predefined range. The Ekahau HS1 measures humidity ranging from 0% to 100% RH (relative humidity) and temperatures ranging from -40° to +85° C / -40° to 185° F.



Ekahau East Coast

(Headquarters)
1851 Alexander Bell Drive
Suite 105
Reston, VA 20191
Tel: 1-866-4EKAHAU
Fax: 1-703-860-2028
sales-americas@ekahau.com

Ekahau Europe

(Sales, R&D, Product Management)
Hiilikatu 3
00180 Helsinki, Finland
Tel: +358-20-743 5910
Fax: +358-20-743 5919
sales-europe@ekahau.com

Ekahau APAC

(Regional office)
B38, Tower 8, Imperial Cullinan
10 Hoi Fai Road, Tai Kok Tsui
Hong Kong
Tel: +852 9227 8406
sales-asia@ekahau.com

Global Tech Support: www.ekahau.com/support

